

User Instruction Handbook



Personal Massager™

RM-11

Table of Contents

1.	General Disclaimer	1
2.	Warning and Caution	2
3.	Personal Massager™ and Accessories	3
4.	Product Features : Massager Features	4
	: PDA-Enabled	4
	: Standalone Options	4
5.	Installation	5
6.	Functionalities : Overview	6
	: Getting Started	6
	: Main Screen	6
	: Modes of Massage	7
	: Hard Button Functions	8
	: Personal Settings	8
	: Message Downloading	10
	: Menu Options	11
7.	Technical Specifications	12
8.	FCC and CE Declaration of Conformity	12
9.	Customer Service	12
10.	Human Body Acupressure points	13
11.	Warranty Information	14
12.	Limited Warranty Form	

DISCLAIMER:

THE RAYNET TECHNOLOGIES (RAYNET) PRODUCT, RAYCOM™ PERSONAL MASSAGER™, IS NOT A MEDICAL DEVICE AND IS NOT INTENDED FOR THE DIAGNOSIS, TREATMENT, CURE, MITIGATION OR PREVENTION OF ANY DISEASE, AILMENT, DEFECT OR INJURY OF THE HUMAN BODY. OUR PRODUCT IS NOT RECOMMENDED FOR USE BY PREGNANT WOMEN OR PERSONS WITH CARDIOVASCULAR OR HEART-RELATED PROBLEMS AND CHILDREN.

This product is designed and sold for recreational and relaxation purposes only and must be used strictly in accordance with the instructions set out in this User Instruction Handbook. No statement made by us in relation to this product, or by any other party associated with our product, whether on our website or our manufacturer's literature enclosed in our packaging or anywhere else, should be construed as a representation, warranty or any claim whatsoever, whether expressed or implied that the product is intended for the diagnosis, treatment, cure, mitigation or prevention of any disease, ailment, defect or injury of the human body.

To the extent allowed under applicable law, we, including but not limited to our servants, agents, employees and other parties associated with this product, assume no liability for any risks involved in the use of the product. We make no warranty expressed or implied, other than the product conforms to applicable standard specifications.

This product has not been approved for any purpose by the FDA.

Please read and observe Warning, Caution and Instructions on the handbook and On-screen menu before using Personal Massager!

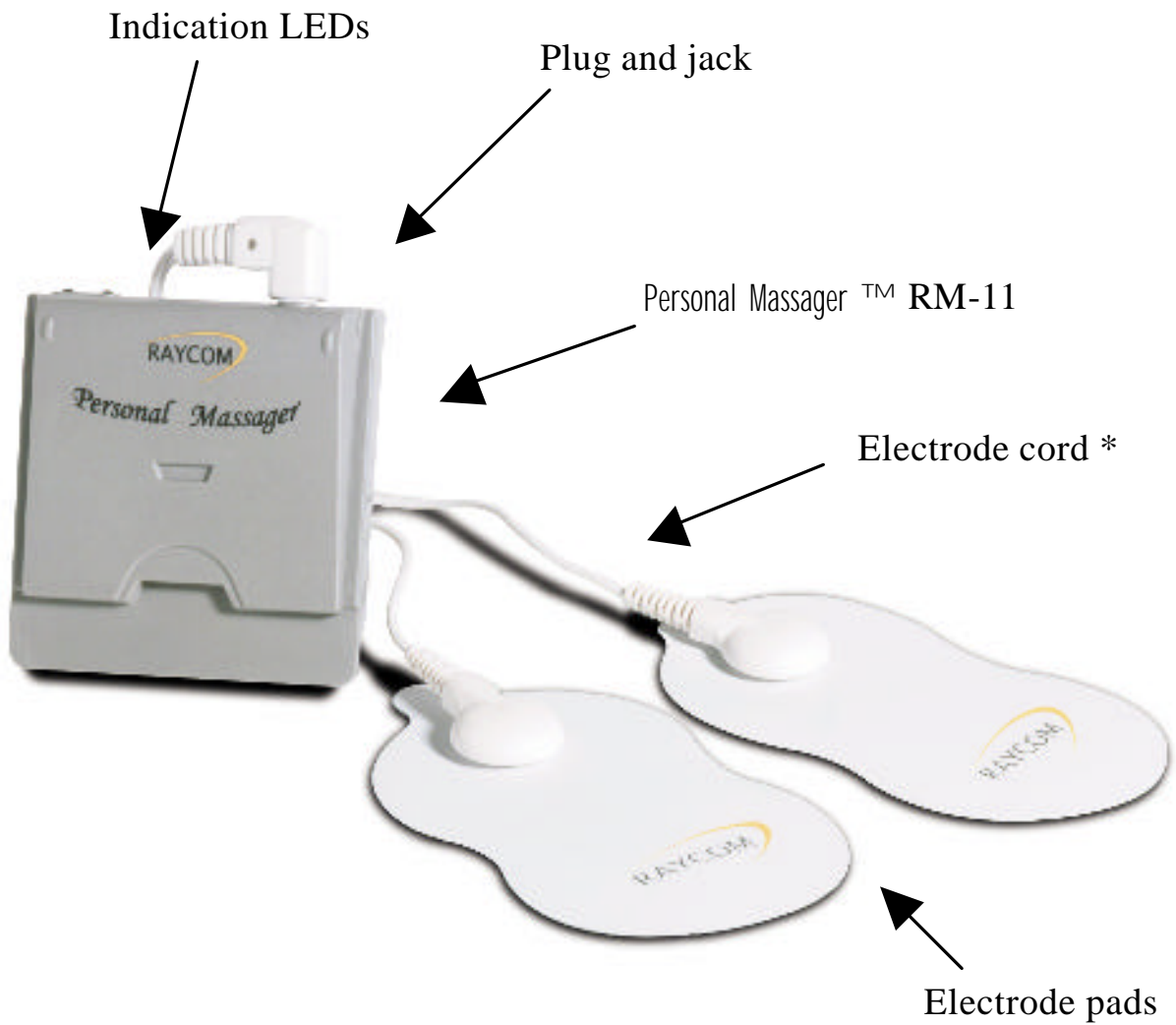
WARNING: FAILURE TO USE THIS PRODUCT AS DIRECTED COULD RESULT IN ELECTRIC SHOCK AND RESULTANT INJURY. DO NOT TOUCH THE GEL SURFACE OF THE PADS WHILE THE MASSAGER IS ON. For your safety and comfort, use only Raycom cord and pads.

The Raynet Technologies (Raynet) Product, RAYCOM™ PERSONAL MASSAGER™, is not intended for the diagnosis, treatment, cure, mitigation or prevention of disease. Our product is not recommended for use by pregnant women or persons with cardiovascular or heart-related problems and children. *If you have any such problems, please consult your physician concerning the use of this product.*

CAUTION

This quality product is designed for the user to enjoy massaging at home, at work or on the go. FOR PERSONAL SAFETY AND COMFORT, the user must observe the following important instructions.

- + The electrode pads must be firmly pressed to clean and dry surface of the body before operating the device.
- + The electrode pads should be kept clean at all times. When pads are noticeably dry, clean and moisten adhesive surface of the pads by wiping the surface with a damp cloth.
- + AVOID storing the electrode pads in areas subject to high temperature, high humidity or direct sunlight.
- + Remove the electrode pads using the peel-off ear of the pads.
- + To avoid minor electric shock, DO NOT TOUCH the gel surface of the pads when the massager is on.
- + Keep the device and pads away from children.
- + The device should not be used with any other massagers, similar devices or any medical and cardiovascular devices.
- + DISCONTINUE use immediately if discomfort develops.
- + Do not use while driving or sleeping.
- + GRADUALLY INCREASE the pressure level to allow body adaptation and comfort. Excessive pressure may cause discomfort.
- + DO NOT USE the Massager above the neck, near the heart or on any genital parts.
- + The recommended massage duration for any one area is 15 minutes. Do not use it for more than 30 minutes.



* Note: Color tracer on electrode cord

Personal Massager™ and its Accessories

Product Features

Massager Features

- ❖ 3 basic modes of massage ie. Squeezing, Chopping and Tapping, and 3 combinations of basic modes (Combo modes) to suit different personalities and desires.
- ❖ Adjustable settings with therapy* option let you personalize your massage.
- ❖ Soft-start and user pressure control for user comfort and gradual adaptation.
- ❖ Auto cut-off and user power-off while massaging for longer battery life.
- ❖ Repeat button for extended enjoyment of the chosen mode.
- ❖ Large Peel-off ear of the electrode pads for easy pad removal and prevention of minor electric shock.

* Therapy option is available on Visor running on PalmOS 3.5 or above.

PDA-Enabled

- ❖ Fully Compatible with your Handspring™ Visor™ handheld.
- ❖ On-Screen Menu and User Instruction Handbook for quick reference.
- ❖ Quick body guide indicates the key pressure points.
- ❖ Animation and graphic display of massage activity and progress.
- ❖ Enable massaging while working on other software applications.
- ❖ Saves up to 3 downloadable personalized massage settings.
- ❖ Free software upgrade and future new massage modes.

Standalone Options

- ❖ Personal Massager™ can also be used alone with an optional Power Pack sold separately.

Installation

1.	Insert Personal Massager™ into Handspring™ Visor™ handheld. Read CAUTION AND WARNINGS on the screen carefully. Tap OK button to begin. Indication LEDs* will momentarily light up in sequence for 1 second followed by verification and retrieval of massage downloads in the module.
2.	Clean and dry the body surface to be massaged. (Note: Pads do not stick well on wet surface.)
3.	Connect the cord to the button of the electrode pads. Caution: At this moment, make sure the cord is not plugged into the jack of Personal Massager™.
4.	Peel the protective film off the electrode pads.
5.	Apply the electrode pads firmly to the surface of the body to be massaged. (Note: Both electrode pads must be firmly applied to the body for massage to work.) Caution: To avoid minor electric shock, DO NOT TOUCH the gel surface of the electrode pads while the massager is on.
6.	Insert the plug of the cord into the module jack and you are ready for your massage. (Proceed to 'Getting started' on the next page.)

* Applicable to Personal Massager™ with serial number starting from RM11-001000.

Functionalities:

Overview

RAYCOM™ Personal Messenger™ is a Handspring™ Visor™ handheld Springboard™ module to massage pressure points of the body particularly the Shoulders, Back, Arms and Legs. It is feature packed with a host of Basic and Combo massage modes, comprehensive options in addition to free download of massage modes. The personal setting screen enables the user to set the various parameters including therapy option for individual preference. User can save up to 3 personalized massage settings for easy retrieval. An optional Power Pack is available for standalone use of the massager.

Getting started

With the Personal Messenger™ plugged into the Handspring™ Visor™ handheld, the system will open the main screen of the Personal Messenger™. Ensure the electrode pads firmly placed on the desired spots of the body or the recommended pressure points, as shown on the On-screen Body Guide and plug the cord into the module jack. The Personal Messenger™ is then ready for selection of options. The user may select the massage mode and simply tap START to activate and return to other applications while massaging is in progress in the background. Alternatively the Personal Messenger™ may be inserted into an optional Power Pack for use if a Handspring™ Visor™ handheld is unavailable.

Main Screen

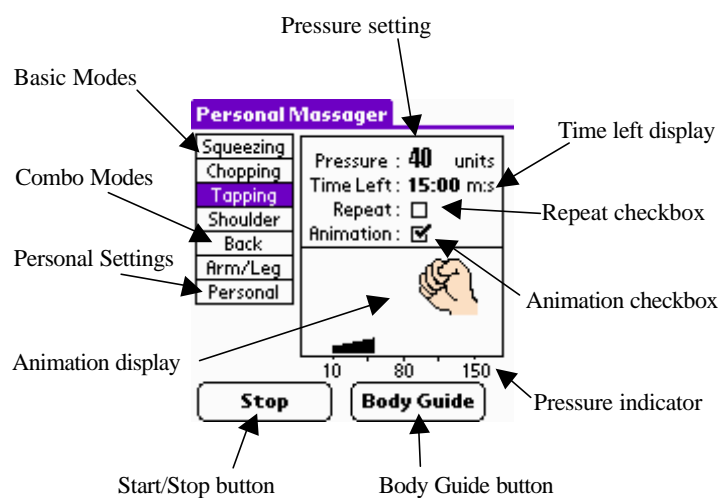


Figure 1

Modes of massage

Massage actions come in 3 basic modes namely Squeezing, Chopping and Tapping, and 3 combinations of basic mode (combo modes) for the Shoulder, Back, Arms and Legs. The activities stimulate the desired spots of the body by sending minute electrical pulses through the two electrode pads. Users are entitled to free download of software upgrade and new massage modes.

The Personal setting screen allows regular users to customize their preferred massage settings. Call the screen with a Tap on Personal. Then proceed to set Frequency, Burst, Ramp up time, Modulation, Duration etc for your preferred setting. Return to main screen and tap START to begin massage.

Animation display

Checking the Animation box enables the user to view the changing modes and progress of the massage.

Start/Stop button

To begin massage, simply tap the Start button.

To stop the massage, simply tap the Stop button.

Body Guide button

To display on-screen recommended pressure points, tap the Body Guide button.

Pressure indicator

The massage pressure level will be shown when the Animation display is enabled.

Animation checkbox

Checking the Animation box will enable the Animation display and Pressure indicator.

Repeat checkbox

Checking the Repeat box will restart the current profile at the end of each massage cycle.

Time left display

The display will show the time left in the massage activity.

Pressure unit

The display shows massage Pressure level set. The level may be changed with Up/Down hard button. The Pressure level has a range between 10 and 150 units with a pre-set step change of 1, 2 or 5 units at each button depression.

Hard Buttons Functions

Change in pressure level

The pressure level may be changed by depressing the Up or Down hard buttons with a pre-set step change of 1, 2, or 5 units.

Change in frequency

(For manual mode only)

Depressing the two rightmost buttons during massaging may change the frequency.

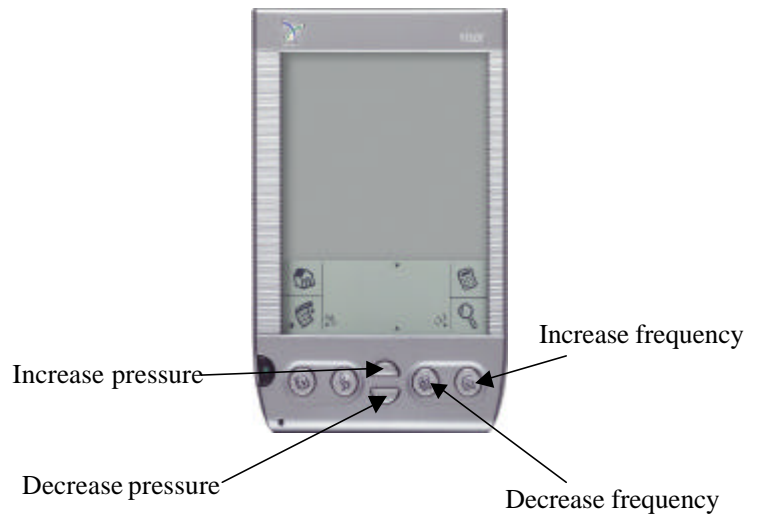


Figure 2

Personal Settings

Burst checkbox

Check Burst box enables Burst setting. Burst is the duration of each impact of a massage movement. It is represented by the number of pulses per cycle.

Ramp up time checkbox

Checking Ramp up time box enables Ramp up time setting. Ramp up time determines the time to reach the set pressure.

Modulation

Modulation smoothens the pressure impact particularly for frequency less than 35 Hz and is set between 1 and 15 pulses.

Duration

This is the user preset time for the selected massage and can be set for anytime between 1 to 30 minutes.

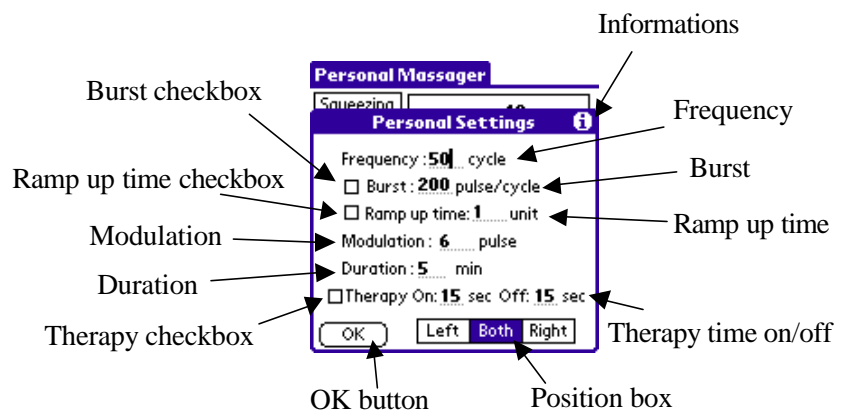


Figure 3

Therapy checkbox

Check Therapy checkbox will enable therapeutic start/stop option. It is only available with Visor running Palm OS 3.5 or above.

Therapy time on/off

Range of setting for time-on and time-off of between 5 and 30 seconds that will activate therapeutic experience.

OK button

After selecting options on the Manual setting screen, tap OK to return to Main screen to START.

Position button

To select the Left, Right or Both positions of the body for massaging button, tap its respective box.

Ramp up time

User may set Ramp up time of the massage between 1 and 15 units. Ramp up time is enabled by a check on Ramp Up Time checkbox.

Burst

User may set Massage Burst pulses between 50 and 250 pulses per cycle. Check the Burst checkbox to enable.

Frequency

The Frequency, ranging between 1 to 200 cycles, sets the different types of massage patterns ie. Squeezing, Chopping or Tapping. User may change the Frequency by using the two right buttons of Handspring™ Visor™ handheld during massaging in manual mode as shown in figure 2.

Tips

When **i** is tapped, useful information will appear on the screen to guide user in the Personal operation.

Settings - Save

Current parameters in the personal setting screen will be saved in 1 of 3 memories.

Settings - Recall

Easy retrieval for saved parameters in the memory and updated personal setting screen.

Settings - Personalize Name

Edit the names of preference in memory.

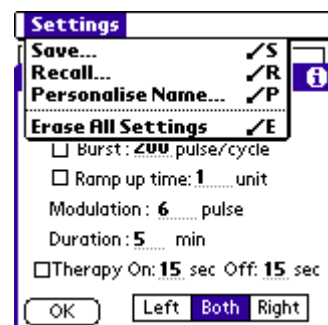


Figure 4

Erase All Settings

All saved parameters in memory are set to default.

Message Downloading

Handheld list

Handheld list stores additional messages downloaded from station, PC and from saved personalized messages*. Tap Copy to select message for module.

* Therapy option is not available for download.

Apply button

Tap Apply to confirm Copy or Removal and return to Personal Massager™ main screen.

Cancel button

Tap Cancel to nullify Copy or Remove actions.

Remove button

To remove unwanted messages from the Module list, highlight selected message and follow by a tap on Remove button. Apply to confirm action.

Module list

Module list will display message copied from the Handheld.

Tips

At a tap on **i**, helpful information will display on the screen to guide the user through the Downloading action.

Copy button

When Copy is tapped, highlighted message in Handheld list will be copied to Module list. Note that any change has to be confirmed with a tap on Apply button.

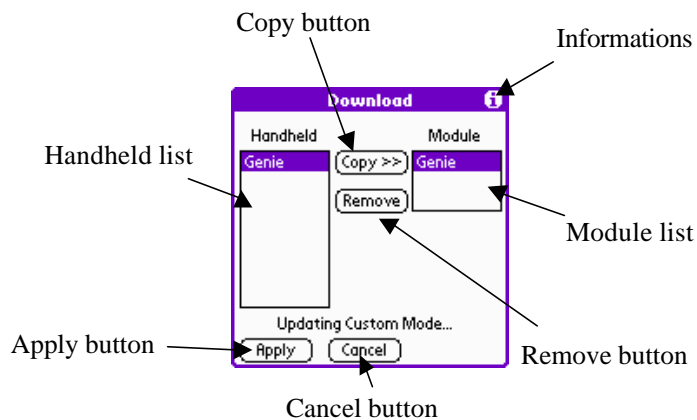


Figure 5

Menu Options

Download

When Download is tapped, the Download screen will appear for user to download or remove additional massage modes from Main screen.

Preference

Under preference, the user is able to select the pressure step of 1, 2 or 5 units for each increment or decrement during user pressure adjustment.

An Emergency stop button is available to select or deselect the “For Emergency, Hit Stop” (figure 8) that enables user to activate emergency stop during massaging.

Instructions

When Instructions are tapped, Quick useful information on the operation of the module will be displayed.

Warning

Users are to carefully read and observe the General Disclaimer, Warning, Caution and Useful information provided in the Warning pull-down option.

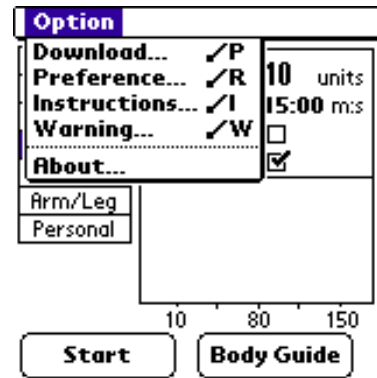


Figure 6



Figure 7



Figure 8

Technical Specifications

Pulse width:	500 μ sec for frequency equal or less than 10 Hz 250 μ sec for frequency greater than 10Hz
Pulse frequency:	1 to 200 Hz
Max output current:	less than 50 mA peak with 1 k Ω load
Output voltage:	Range from \pm 10 V ~ \pm 70 V peak
Variable ramp rate	1 to 15 pulses per level jump approximately 3 mA per level rate is proportional to frequency setting
Burst rate:	50 to 250 pulses on, 0.5 sec pulse off
Auto cut off time:	15 pulses with no load sense
Soft start level:	each sequence starts from minimum level about 3 mA output
LED indication:	2 LEDs lit up momentary in sequence at each program launch from stop. The LEDs also provides as indications with the optional power pack.
Power consumption:	less than 50 mA @ 3.3Vdc
Operating voltage:	3.3 Vdc from 2 AAA batteries running from Handspring™ Visor™ handheld
Weight:	approx. 25g.

FCC Declaration of Conformity

This device complies with part 15 of the FCC Rules. Operation is subject to the following two conditions:

- (1) This device may not cause harmful interference, and
- (2) This device must accept any interference received, including interference that may cause undesired operation.

CE Declaration of Conformity

This device is in conformity with the following standards:

EN 55022: 1998 (CLASS B)

EN 55024: 1998

per the provisions of the Electromagnetic Compatibility Directive 89/336/EEC.

Customer Service

Customer service will be provided by Raynet's designated service center/s. However you may wish to log on to our website, www.raynet-tech.com for news, updates and any product announcement or email address, help@raynet-tech.com for customer service. We thank you for purchasing this quality product and welcome your feedback.

Human Body Acupressure Points

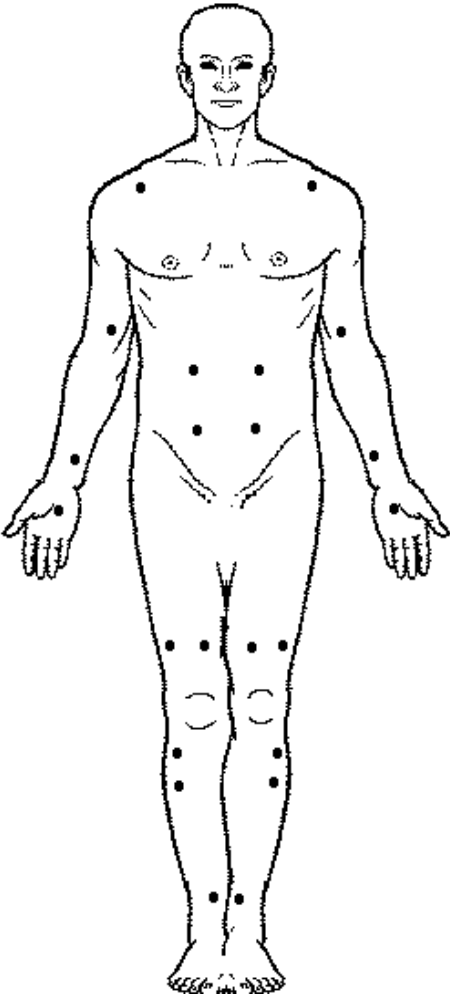


Figure 8 Front body

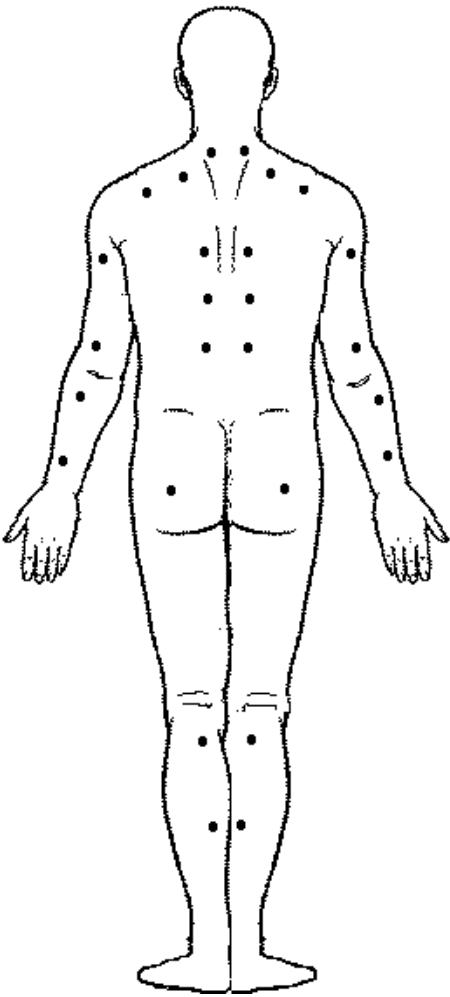


Figure 9 Back body

Warranty Information

LIMITED WARRANTY

Raynet™ warrants to the original end user that purchases this product new from Raynet™ or its authorized retailer that this RM-11 hardware product except the conductive pads, cable or any other associated accessories will be free from defects in workmanship and materials, under normal intended use, for ninety (90) days from the date of original purchase. Raynet's sole obligation under this express warranty shall be, at Raynet's option and expense to replace the Product or part with a comparable product or repair the Product or if neither repair nor replacement is reasonably available, Raynet™ may, in its sole discretion, refund to Customer the purchase price paid for the Product. All Products or parts that are replaced become the property of Raynet™. Raynet™ shall not be responsible for Customer's or any third party's software, firmware, information, or data integrated with any Products returned to Raynet™ for repair, whether under warranty or not.

WARRANTY SERVICE

Customer must register the product on the website within 7 days from the date of original purchase at www.raynet-tech.com providing the full relevant information as requested. Customer must deliver any defective Products or parts with the warranty form with the original purchase invoice and receipt to Raynet's designated service center/s within the applicable warranty period and provide dated proof of original purchase from Raynet™ or its authorized retailer. Raynet™ is not responsible for Customer Products or parts received without a warranty service authorization. Raynet™ may, at its own discretion, repair or replace the Products or parts as soon as reasonably possible. Repaired or replacement Products or parts may be collected by the customer at Raynet's designated service center/s. The repair and replacement process for Products or parts in each country will vary depending on Customer's location.

Raynet™ shall not be liable under this warranty if its testing and examination disclose that the alleged defect in the Product does not exist or was caused by misuse, neglect, improper installation or testing, unauthorized attempts to open, repair, or modify the Product, or any other cause beyond the range of the intended use, or by accident, fire, lightning, other hazards, or acts of God. This warranty does not cover physical damage to the surface of the Product, including cracks or scratches on the outside casing. This warranty does not apply when the malfunction results from the use of this Product in conjunction with any unauthorized products and Raynet™ determines that there is no fault with the Product itself.

GENERAL WARRANTY

PRICING:

All prices are subject to change without prior notification. We are not responsible for misprints or out of stock items.

Duties and Taxes:

All duties and taxes associated with international shipping charges are the responsibility of the customer.

STYLES:

Actual styles of some products and accessories may vary from the pictorial representation found in the catalog and / or website.

REFUNDS:

Refunds will be made with the same method of payment as the original order.

LIMITATION OF LIABILITY.

To the full extent allowed by law, Raynet™ also excludes for itself and its retailers any liability, whether based in contract or tort (including negligence), for incidental, consequential, indirect, special, or punitive damages, or for loss of revenue, profits, business, data, or other financial loss arising in connection with the product or its use, and limits its liability to replacement, repair, or refund of the purchase price paid at Raynet's option.

GENERAL

Export Restrictions.

You must not export or re-export the Product or accompanying documentation (or any copies thereof) in violation of any applicable laws or regulations of the country in which you obtained them.

Severability.

In the event any provision of this Agreement is found to be invalid, illegal or unenforceable, the validity, legality and enforceability of any of the remaining provisions shall not in any way be affected or impaired and a valid, legal and enforceable provision of similar intent and economic impact shall be substituted.

Limited Warranty Form

IMPORTANT! Thank you for purchasing RAYCOM™ Personal Massager™. All registration must be done online at www.raynet-tech.com within 7 days from the date of original purchase. Please complete the form below and attach with the invoice or receipt as proof of original purchase. You are required to produce them during each warranty service at Raynet's designated service center/s.

1. Mr.	2. Mrs.	3. Ms.	4. Miss
First Name:	Initial:	Last Name:	
_____		_____	_____
Address: (Number and Street)			Apt. #
_____			_____
City:	State:	Zip	
_____		_____	_____
Phone Number:	Date of Purchase: (Month/Day/Year)		
_____	_____		
Store Name:	Invoice/Receipt No.	Serial Number:	
_____	_____	_____	

Raynet, Raycom, Personal Massager and Raynet, Raycom logos are trademarks of Raynet Technologies. Handspring, Springboard, Visor and the Handspring logo are the trademarks of Handspring, Inc. All other trademarks and trade names are the property of the respective owners.

Information in this document is subject to change without notice. No part of this document may be reproduced or transmitted in any form or by any means, electronic or mechanical, for any purpose, without the written permission of Raynet Technologies.

Copyright ©2002 Raynet Technologies. All rights reserved

Raynet™ may have pending patent applications, trademarks, copyrights or other intellectual property rights covering subject matter in this document.

Raynet Technologies

Website: www.raynet-tech.com

Customer service: help@raynet-tech.com

Revision 1.6